



Thornbury Town Council

# Local Climate and Nature Action Plan

2023-2028

*Photo by Colin Sheppard*



## CONTENTS

Introduction.....	2
Background of the Parish .....	3
Objectives of the Plan .....	3
Our past work.....	4
Partnership .....	5
Stakeholders .....	6
Stakeholders interest grid .....	6
Communication and Engagement Plan .....	7
Monthly communication topics .....	10
Point-based award scheme.....	11
Mapping.....	12
Service Searches .....	12
Ecological Survey .....	12
Tree Survey.....	12
Funding .....	13
5-Years Work Programme .....	14
References .....	19

## INTRODUCTION



Welcome to the Thornbury Local Climate and Nature Action Plan (the Plan). As a community, Thornbury Town Council (TTC) recognize the importance of taking action to address the climate and nature challenges that impact biodiversity and the well-being of everyone.

***One of the four headline priorities of the Thornbury Town Council Strategy for 2023 to 2028 is to ‘Implement Thornbury’s Local Climate and Nature Action Plan to deliver the council’s commitment to tackle the Climate Emergency’.***

TTC had declared a [Climate and Nature \(Ecological\) Emergency](#) in 2021, resolves to:

1. Declare a Climate and Nature (Ecological) Emergency.
2. To work with South Gloucestershire Council, neighbouring Town and Parish Councils, the West of England Combined Authority (WECA) and partners across the area to help us deliver our 2030 target.
3. Pledge to provide the leadership to work with the Community to aim to make Thornbury carbon neutral by 2030.
4. To set up and work with a group of local experts as an advisory committee to Council to develop a strategy to tackle Climate Change in Thornbury.
5. To develop a Climate and Nature Emergency action plan for Thornbury to deliver our commitments.
6. To substantially increase tree cover and biodiversity in Thornbury by 2030.
7. To inform and support local residents, organisations and businesses to play their part.
8. To request an initial progress report to the meeting of Council in May 2022 with at least an annual report on progress to full Council thereafter.

This Plan will build on TTC's existing initiatives while introducing new ones to help achieve a more sustainable future for Thornbury. It includes campaigns targeting energy and water-saving, waste reduction, greenhouse gas reduction and enhancement of green spaces. The primary focus of the Plan will be on TTC's assets where we can exert the most influence.

We hope that the Plan will inspire individuals, communities and businesses across Thornbury to take action and work together to create a sustainable future for generations to come. Let us come together and make Thornbury an even better place for all of us.

## BACKGROUND OF THE PARISH

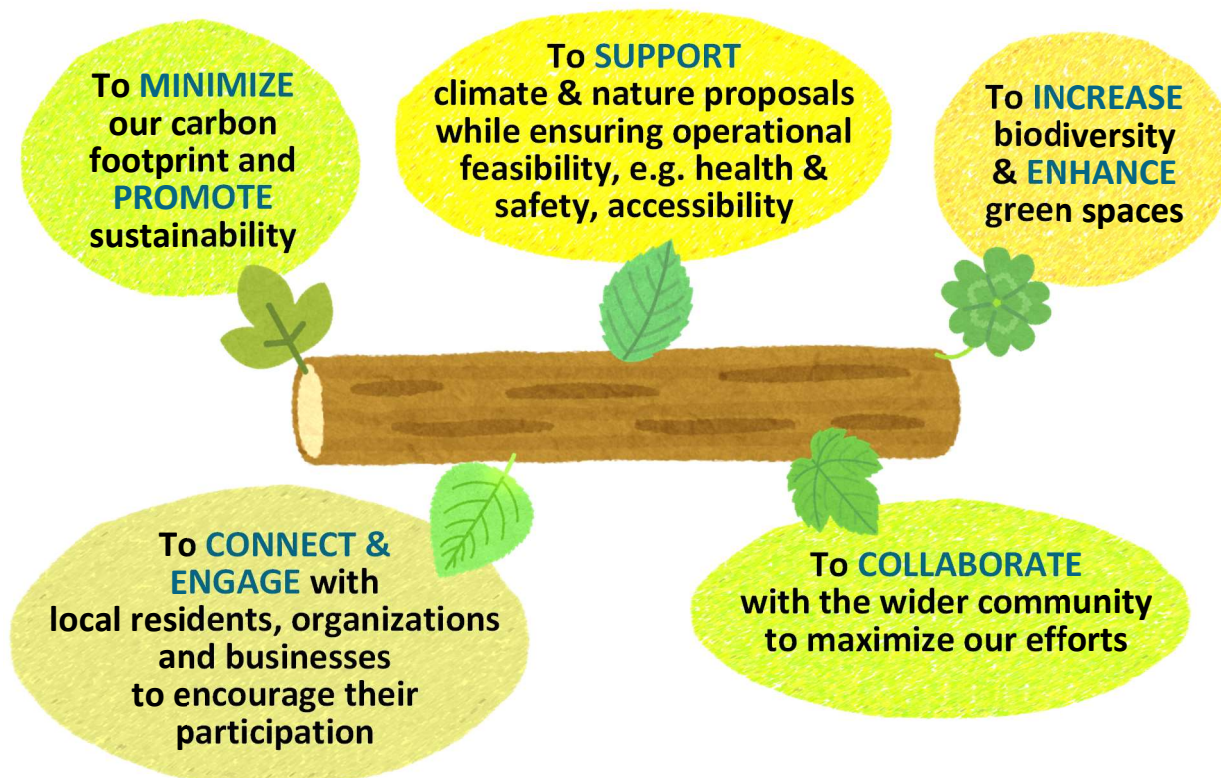


<b>Total area</b>	1687.614ha
<b>Town council owned and managed land</b>	Approx. 22.66ha (Approx. 1.34% of total land)
<b>Population</b>	14,496 (as of 2021 census)
<b>Unitary authority</b>	South Gloucestershire
<b>Facilities</b>	Town Hall, Playgrounds, Playing Fields, Cemetery

*Our Vision*

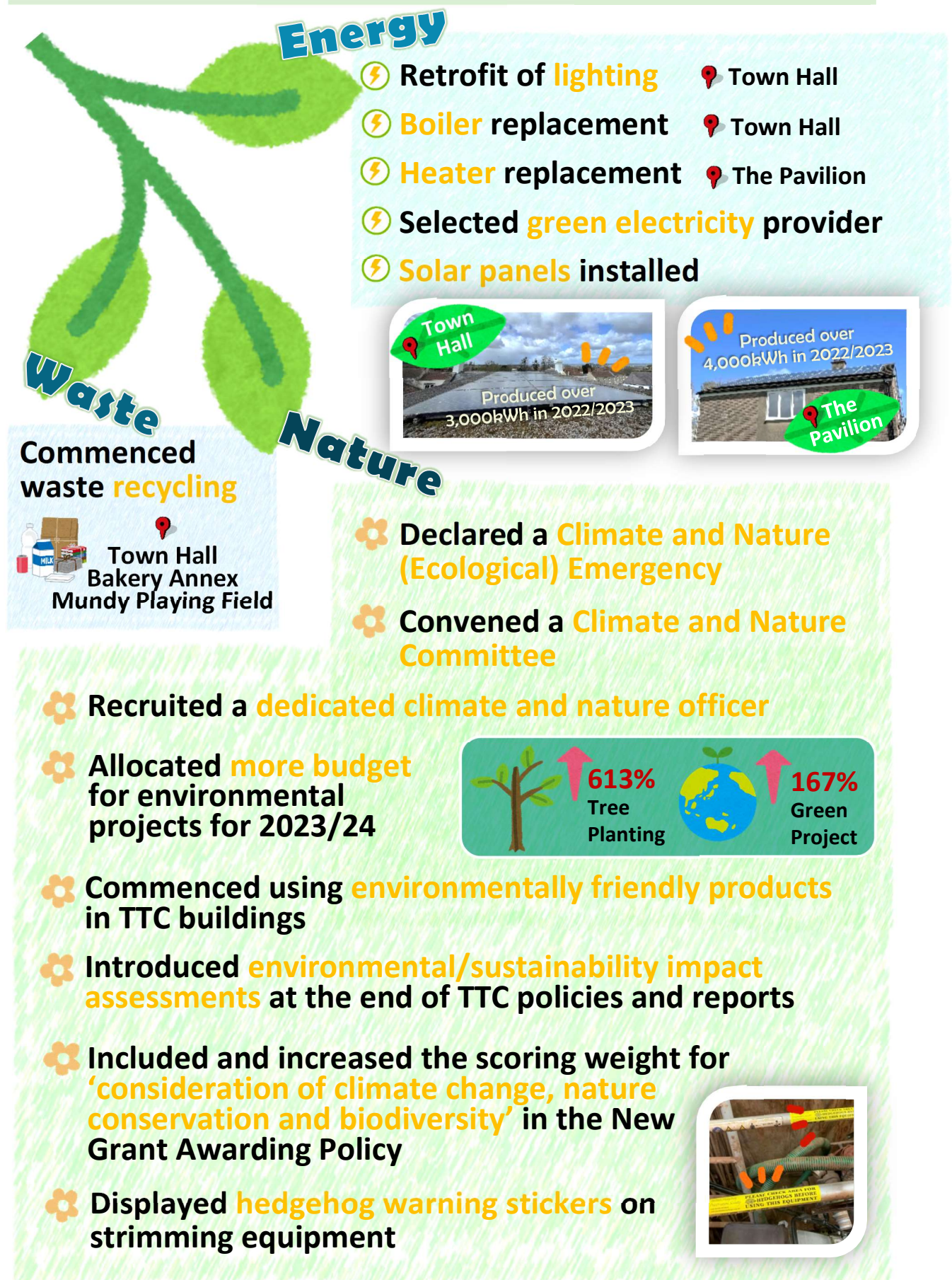
*To be a local leader as Thornbury expands; deliver high quality, affordable services; work positively in partnership with local and public sector organisations, local businesses and the community throughout Thornbury.*

## OBJECTIVES OF THE PLAN





## OUR PAST WORK



## PARTNERSHIP

The Plan will be led by Thornbury Town Council (TTC) with support from the following key partners that share our goals and values. Through these partnerships, we can leverage our collective expertise, resources and influence to achieve meaningful progress towards a more sustainable future.

ORGANISATION	ROLE	CONTACT
<b>TTC Climate and Nature Committee</b>	Lead, funding, committee structure	Yan Cheung Climate and Nature Officer ☎ 014 5441 2103 ✉ <a href="mailto:climateandnature@thornburytowncouncil.gov.uk">climateandnature@thornburytowncouncil.gov.uk</a> 📍 Town Hall, High Street, Thornbury, Bristol BS35 2AR
<b>South Gloucestershire Council (SGC)</b>	Guidance	<a href="mailto:Climate.Emergency@southglos.gov.uk">Climate.Emergency@southglos.gov.uk</a>
<b>Sustainable Thornbury</b>	Volunteer, work, reviewing plan	<a href="https://www.sustainablethornbury.org/index.php?mylink=Home">https://www.sustainablethornbury.org/index.php?mylink=Home</a>
<b>Thornbury In Bloom</b>	Volunteer, work, reviewing plan	<a href="https://www.facebook.com/thornburyinbloom/?locale=en_GB">https://www.facebook.com/thornburyinbloom/?locale=en_GB</a>
<b>Holy Mowers</b>	Volunteer, work, reviewing plan	Mr. Guy Rawlinson
<b>TTC Tree Warden</b>	Volunteer, work, reviewing plan	Ms. Judith Hurford
<b>TTC Volunteer Programme – EcoThornbury Guardians</b>	Volunteers, reviewing plan, tree plantings	Yan Cheung Climate and Nature Officer ☎ 014 5441 2103 ✉ <a href="mailto:climateandnature@thornburytowncouncil.gov.uk">climateandnature@thornburytowncouncil.gov.uk</a> 📍 Town Hall, High Street, Thornbury, Bristol BS35 2AR

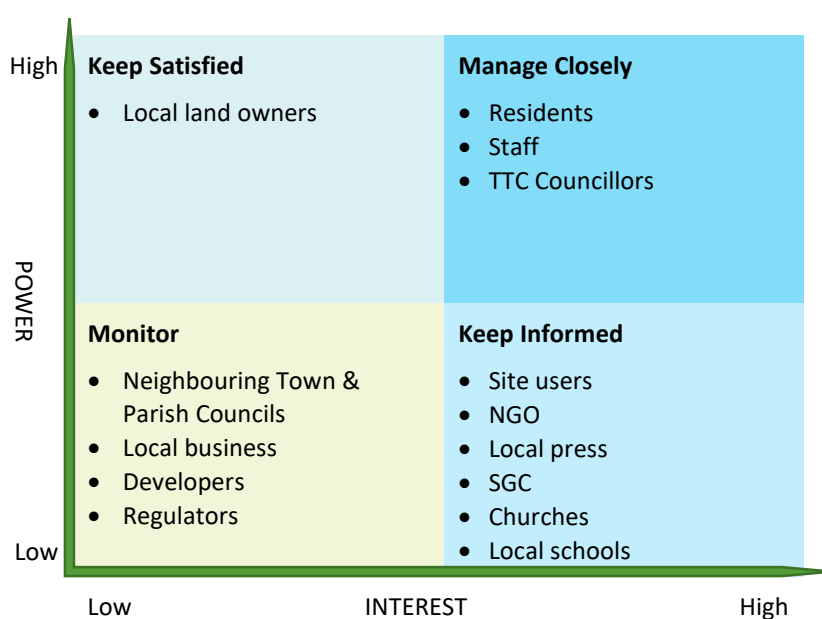
## STAKEHOLDERS

It is essential to identify stakeholders who can be affected by or have an impact on the Plan's outcomes. The stakeholders can vary from individuals to groups to organizations. We have identified the stakeholders below and will approach them in a manner that best meets their interests and needs (see [Communication and Engagement Plan](#)).

EXTERNAL	INTERNAL
Residents Community groups Local schools Neighbouring Town & Parish Councils Churches Local businesses Site users Local landowners Developers Regulators Local press South Gloucestershire Council (SGC)	Staff Thornbury Town Council (TTC) Councillors

## STAKEHOLDERS INTEREST GRID

We have categorized our stakeholders into a stakeholder interest grid that highlights their likely level of interest and influence in the Plan. This grid enables us to identify the key stakeholders that we need to engage more intensively to ensure the smooth implementation of the Plan.



## COMMUNICATION AND ENGAGEMENT PLAN

The communication and engagement plan, outlined in the table below, takes into account the likely communication preferences of stakeholders and identifies the most effective channels to reach them. It aims to ensure that our messages are well-received and understood by different stakeholders, helping us build trust, strengthen relationships and achieve our objectives.

In addition, we have compiled a list of [monthly communication topics](#) that aligns with national or global climate and nature awareness days. By participating in these larger global conversations, we aim to create a sense of shared responsibility and collective action towards addressing climate change as global citizens.

Community involvement is crucial to achieving our objectives. To encourage and inspire individuals to take an active role in our projects, we will introduce a community programme called EcoThornbury. It aims to foster a sense of responsibility for the environment in Thornbury by encouraging people to get involved in TTC's climate and nature projects. There will be a [point-based award scheme](#) under this programme called EcoThornbury Points to recognize positive environmental action and sustainable behaviours among individuals. Through an annual award ceremony, we will celebrate the collective effort of individuals towards the EcoThornbury community and cultivate a sense of accomplishment and pride within the community.

Stakeholder	Objectives (actions)	Message content	Delivery method	Timeline
<b>EXTERNAL</b>				
<b>Residents</b>	<ul style="list-style-type: none"> <li>Keep informed of proposed projects/campaigns</li> <li>Receive feedbacks on projects/campaigns proposals</li> <li>Provide updates on current projects/campaigns</li> <li>Gain access to volunteer labour</li> <li>Raise sustainability/environmental awareness</li> </ul>	<ul style="list-style-type: none"> <li>Projects/campaigns proposals</li> <li>Projects/campaigns performance and progress</li> <li>Projects/campaigns details</li> <li>National sustainability/environmental days/targets</li> </ul>	<ul style="list-style-type: none"> <li>Facebook, TTC's website, E-mail</li> <li>TTC's notice board</li> <li>Pop-up stands</li> <li>Town Hall</li> </ul>	<ul style="list-style-type: none"> <li>Prior to projects/campaigns beginning</li> </ul>
			<ul style="list-style-type: none"> <li>'Green Corner' in TTC's newsletter</li> </ul>	<ul style="list-style-type: none"> <li>Quarterly</li> </ul>
			<ul style="list-style-type: none"> <li>Committee meetings (Formal or informal online session)</li> </ul>	<ul style="list-style-type: none"> <li>Six times a year (Formal session)</li> <li>Every other month (Informal online session)</li> </ul>
			<ul style="list-style-type: none"> <li>Workshops/Seminars +/- guest speakers</li> </ul>	<ul style="list-style-type: none"> <li>See <a href="#">monthly communication topic</a> OR as and when relevant projects/campaigns is taking place</li> </ul>



Stakeholder	Objectives (actions)	Message content	Delivery method	Timeline
			<ul style="list-style-type: none"> <li>Game/promotion booth in community event</li> </ul>	<ul style="list-style-type: none"> <li>Yearly OR as and when relevant event is taking place</li> </ul>
<b>Community groups</b>	<ul style="list-style-type: none"> <li>Find collaboration opportunities</li> <li>Keep informed of relevant proposed projects/campaigns</li> <li>Receive feedbacks on relevant projects/campaigns proposals</li> <li>Gain access to volunteer labour</li> </ul>	<ul style="list-style-type: none"> <li>Projects/campaigns proposals</li> <li>Projects/campaigns details</li> </ul>	<ul style="list-style-type: none"> <li>Committee meetings (Formal or informal online session)</li> </ul>	<ul style="list-style-type: none"> <li>Monthly</li> </ul>
			<ul style="list-style-type: none"> <li>Email/Letter</li> <li>Presentation</li> </ul>	<ul style="list-style-type: none"> <li>Prior to projects/campaigns beginning</li> </ul>
<b>Local schools</b>	<ul style="list-style-type: none"> <li>Find collaboration opportunities</li> <li>Keep informed of relevant proposed projects/campaigns</li> <li>Gain access to volunteer labour</li> <li>Raise sustainability/environmental awareness through relevant projects/campaigns</li> </ul>	<ul style="list-style-type: none"> <li>Projects/campaigns proposals</li> <li>Projects/campaigns details</li> </ul>	<ul style="list-style-type: none"> <li>Email/Letter</li> <li>Presentation</li> </ul>	<ul style="list-style-type: none"> <li>Prior to projects/campaigns beginning</li> </ul>
			<ul style="list-style-type: none"> <li>Workshops/Seminars +/- guest speakers</li> </ul>	<ul style="list-style-type: none"> <li>As and when projects/campaigns is taking place</li> </ul>
<b>Neighbouring Town &amp; Parish Councils</b>	<ul style="list-style-type: none"> <li>Find collaboration opportunities</li> <li>Share ideas on projects/campaigns</li> </ul>	<ul style="list-style-type: none"> <li>Projects/campaigns proposals</li> <li>Successful projects/campaigns demonstration</li> </ul>	<ul style="list-style-type: none"> <li>Email/Letter</li> </ul>	<ul style="list-style-type: none"> <li>Prior to projects/campaigns beginning</li> </ul>
			<ul style="list-style-type: none"> <li>Roundtable +/- site visit</li> </ul>	<ul style="list-style-type: none"> <li>Yearly</li> </ul>
<b>Churches</b>	<ul style="list-style-type: none"> <li>Keep informed of relevant proposed projects/campaigns</li> <li>Receive feedbacks on relevant projects/campaigns proposals</li> <li>Gain access to volunteer labour</li> </ul>	<ul style="list-style-type: none"> <li>Projects/campaigns proposals</li> <li>Projects/campaigns details</li> </ul>	<ul style="list-style-type: none"> <li>Email</li> </ul>	<ul style="list-style-type: none"> <li>Prior to projects/campaigns beginning</li> </ul>
<b>Local business</b>	<ul style="list-style-type: none"> <li>Find sponsorship opportunities</li> <li>Find collaboration opportunities</li> <li>Keep informed of relevant proposed projects/campaigns</li> <li>Gain access to volunteer labour</li> </ul>	<ul style="list-style-type: none"> <li>Projects/campaigns proposals</li> <li>Projects/campaigns details</li> </ul>	<ul style="list-style-type: none"> <li>Email/Letter</li> <li>Presentation</li> </ul>	<ul style="list-style-type: none"> <li>Prior to relevant projects/campaigns beginning</li> </ul>
<b>Site users</b>	<ul style="list-style-type: none"> <li>Ensure users understand TTC's commitment on Climate and Nature Emergency</li> <li>Raise sustainability/environmental awareness</li> <li>Gain access to volunteer labour</li> </ul>	<ul style="list-style-type: none"> <li>New guidelines/policy/management plans</li> <li>Good practice in site</li> <li>Projects/campaigns details</li> </ul>	<ul style="list-style-type: none"> <li>Email</li> </ul>	<ul style="list-style-type: none"> <li>As and when necessary</li> </ul>
			<ul style="list-style-type: none"> <li>Notice board</li> <li>Reminder stickers</li> </ul>	<ul style="list-style-type: none"> <li>Throughout the year</li> </ul>

Stakeholder	Objectives (actions)	Message content	Delivery method	Timeline
<b>Local landowners</b>	<ul style="list-style-type: none"> <li>Find collaboration opportunities</li> <li>Find sponsorship opportunities</li> <li>Keep informed of relevant proposed projects/campaigns</li> </ul>	<ul style="list-style-type: none"> <li>Projects/campaigns proposals</li> <li>Projects/campaigns details</li> </ul>	<ul style="list-style-type: none"> <li>Email/Letter</li> <li>Presentation</li> </ul>	<ul style="list-style-type: none"> <li>Prior to relevant projects/campaigns beginning</li> </ul>
<b>Developers</b>	<ul style="list-style-type: none"> <li>Find sponsorship opportunities</li> <li>Find collaboration opportunities</li> <li>Gain access to volunteer labour</li> </ul>	<ul style="list-style-type: none"> <li>Projects/campaigns proposals</li> <li>Projects/campaigns details</li> </ul>	<ul style="list-style-type: none"> <li>Email/Letter</li> <li>Presentation</li> </ul>	<ul style="list-style-type: none"> <li>Prior to relevant projects/campaigns beginning</li> </ul>
<b>Regulators</b>	<ul style="list-style-type: none"> <li>Keep informed of relevant projects/campaigns</li> <li>Receive feedbacks/permits on relevant projects/campaigns proposal</li> </ul>	<ul style="list-style-type: none"> <li>Projects/campaigns proposals</li> </ul>	<ul style="list-style-type: none"> <li>Email</li> </ul>	<ul style="list-style-type: none"> <li>Prior to projects/campaigns beginning</li> </ul>
<b>Local press</b>	<ul style="list-style-type: none"> <li>Provide updates on current projects/campaigns</li> <li>Promote TTC's effort on addressing Climate and Nature Emergency</li> <li>Help TTC to engage with a wider audience</li> </ul>	<ul style="list-style-type: none"> <li>Projects/campaigns performance and progress</li> </ul>	<ul style="list-style-type: none"> <li>Community's newsletter</li> <li>Email</li> </ul>	<ul style="list-style-type: none"> <li>As and when newsletter is published</li> </ul>
<b>SGC</b>	<ul style="list-style-type: none"> <li>Provide updates on current projects/campaigns</li> <li>Gain access to SGC knowledge bank</li> </ul>	<ul style="list-style-type: none"> <li>Projects/campaigns performance and progress</li> <li>Projects/campaigns proposals</li> </ul>	<ul style="list-style-type: none"> <li>Progress report</li> <li>Email</li> </ul>	<ul style="list-style-type: none"> <li>Yearly</li> <li>Prior to relevant projects/campaigns beginning</li> </ul>
<b>INTERNAL</b>				
<b>Staff</b>	<ul style="list-style-type: none"> <li>Ensure staff understand and support TTC's commitment on Climate and Nature Emergency</li> <li>Acquire technical opinions on relevant projects/campaigns</li> <li>Raise sustainability/environmental awareness</li> </ul>	<ul style="list-style-type: none"> <li>New guidelines/policy/management plans</li> <li>Current projects/campaigns</li> <li>Projects/campaigns proposals</li> <li>Good practice in workplace</li> </ul>	<ul style="list-style-type: none"> <li>Environmental trainings +/- workshops</li> <li>Internal e-mail</li> <li>Internal notice board</li> <li>Workgroup meetings</li> <li>Reminder stickers</li> </ul>	<ul style="list-style-type: none"> <li>Yearly</li> <li>As and when necessary</li> <li>Prior to projects/campaigns beginning</li> <li>Throughout the year</li> </ul>
<b>TTC Councillors</b>	<ul style="list-style-type: none"> <li>Gain support for proposed projects/campaigns</li> <li>Receive feedbacks on projects/campaigns proposals</li> <li>Provide updates on current projects/campaigns</li> <li>Help TTC to engage with all residents and businesses</li> </ul>	<ul style="list-style-type: none"> <li>Projects/campaigns proposals</li> <li>Projects/campaigns performance and progress</li> <li>Resources needed for proposed projects/campaigns</li> </ul>	<ul style="list-style-type: none"> <li>Committee meetings</li> </ul>	<ul style="list-style-type: none"> <li>Six times a year (Formal session)</li> <li>Every other month (Informal online session)</li> <li>Full Council Meeting when necessary</li> </ul>

Note: +/- = with or without



## MONTHLY COMMUNICATION TOPICS

MONTH	TOPIC	ENGAGEMENT				
		Talk/Seminar/ Webinar	E-activities	Workshop/ Events	Promotion post	Cleanup Day
JAN	Big Garden Birdwatch	-	-	Bird/Bat Box	-	-
FEB	World Wetlands Day	-	-	-	✓	✓
MAR	Earth Hour	-	Turn off non-essential electric lights, for one hour, from 8:30 to 9:30 p.m.	-	-	-
APR	Earth Day	-	-	-	✓	✓
	City Nature Challenge	-	City Nature Challenge [iNaturalist]	Bat Walk	-	-
MAY	No Mow May	-	-	-	✓	-
	World Bee Day	-	-	Bug Hotel	-	-
	Hedgehog awareness week	-	-	-	✓	-
JUN	World Environment Day	-	-	-	✓	✓
	World Oceans Day	-	-	-	✓	-
	Great Big Green Week	+/- Guest speaker	-	+/- Green Event with EcoThornbury Awards Ceremony	-	-
JUL	Love Parks Week	-	Nature Hunt	-	-	-
AUG	National Allotments Week	-	-	Wildflower meadow planting	-	✓
SEP	International Day for the Preservation of the Ozone Layer	+/- Guest speaker	-	Fruit enzyme cleaner	✓	-
OCT	World Animal Day	-	Hedgehog Home	-	-	-
NOV	National Tree Week	-	-	Tree planting	-	✓
DEC	Green Festival	Green Festival	+/- Eco-friendly decoration	-	-	-

Note: +/- = with or without

## POINT-BASED AWARD SCHEME

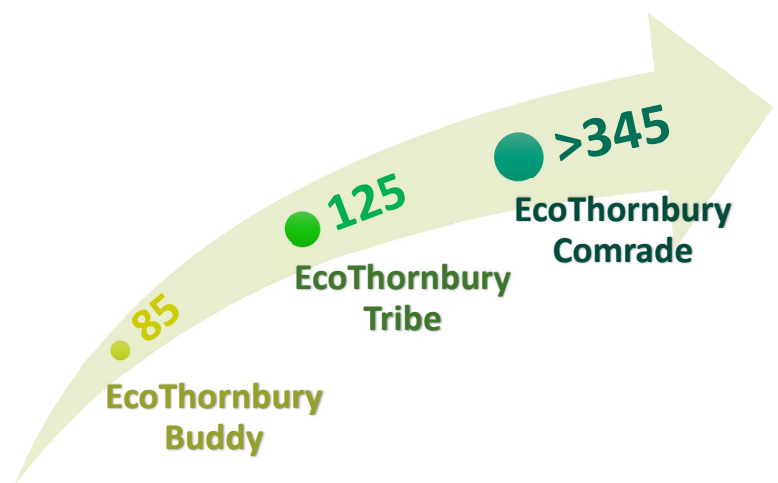
"EcoThornbury Points" is a point-based award scheme, under the community programme EcoThornbury, that recognizes the efforts of individuals who make a positive impact on the environment and are devoted to achieving the goals set out in the Plan. It also incentivizes people to participate and contribute to the community.

By completing different tasks such as volunteering or participating in TTC's climate and nature projects, people can earn respective EcoThornbury Points.



These points will accumulate over the year and individuals will be eligible for different awards based on their total accumulated points. An annual award ceremony will be held to reward the awardees with certificates and prizes. It gives us a great opportunity to unite and celebrate the progress we make towards an eco-friendly community.

*EcoThornbury Points award categories:*





## MAPPING

The main features in Thornbury that are relevant to the Plan have been mapped, including assets of Thornbury Town Council (TTC), open spaces management proposals, habitats and lands managed by South Gloucestershire Council (SGC).

TTC manages and maintains the following sites and assets (mapped in the 'Town Council Asset' layer):

BUILDING	GREEN SPACE	CEMETERY	AMENITIES
<ul style="list-style-type: none"> <li>•Town Hall</li> <li>•67 High Street</li> <li>•Bakery annexe</li> <li>•The Pavilion</li> </ul>	<ul style="list-style-type: none"> <li>•Thicket Walk</li> <li>•Oakleaze Green</li> <li>•Mundy Playing Fields and play area</li> <li>•Chantry Playing Field</li> </ul>	<ul style="list-style-type: none"> <li>•Thornbury Cemetery</li> <li>•St Mary's Church closed churchyard</li> </ul>	<ul style="list-style-type: none"> <li>•Chantry Road Play Area (off Tilting road)</li> <li>•Osprey Park Play Area</li> <li>•Eastland Avenue Play Area</li> <li>•Streamleaze Play Area</li> <li>•Public Tennis Courts</li> <li>•Thornbury Skate Park</li> </ul>

In this Plan, we focus on optimizing locations where TTC has the most influence. Some of the SGC-owned land in Thornbury is mapped in the 'South Gloucestershire Council Managed Land' layer. However, private land has not been mapped. Opportunities in these areas will be explored in later phases.

Visit the link below to see the map:

<https://www.google.com/maps/d/viewer?mid=16yo55iqpLjniK19BflqduIQlf6n8xPg&ll=51.61537438173854%2C-2.510942549999986&z=13>

## SERVICE SEARCHES

For projects that may involve soil excavation, service searches will be conducted in advance to ensure that the work does not affect any existing underground infrastructure.

## ECOLOGICAL SURVEY

In 2022 summer, an ecological survey was conducted to assess the state of 7 green spaces owned by TTC. The report proposed a grassland management plan, tree/hedge/wildflower planting, and installation of wildlife habitats to enhance the biodiversity of each space. The officers' recommendations on the implementation of the ecological surveys were agreed in March 2023 in the Open Space Committee. And the proposals have been incorporated into this Plan and mapped in the 'Opportunities' layer. For detailed information, including the specific recommendations, please refer to the reports available at the following link: <https://www.thornburytowncouncil.gov.uk/wp-content/uploads/sites/51/2023/03/Agenda-and-Papers-Open-Spaces-Committee-21.03.23.pdf>.

## TREE SURVEY

A tree survey is carried out regularly, usually every 2-3 years, to ensure that any issues are identified and addressed promptly. It provides a valuable insight into the current state of the trees, including any potential hazards or areas where additional care may be needed, which will help to reduce any losses before it is too late. The most recent survey was conducted in 2022, and a detailed report can be found in the link below: [link]

## FUNDING

Thornbury Town Council (TTC) has allocated a budget of £7,500 for green projects. In addition to this, we have funding from other sources such as the open space committee and tree planting. Moreover, whenever relevant projects arise, we will pursue additional funding through various applications and proposals. We believe that adopting this diverse approach will provide us with multiple avenues to support and expand our projects beyond the initial funding.

SOURCE	AMOUNT	TIMELINE	SPECIFIC PROJECT OR GENERAL
TTC Budget	£7,500	Yearly	Green projects



## 5-YEARS WORK PROGRAMME

The programme aims to address five main categories relevant to local climate and nature needs: Water, Energy, Waste, Greenhouse Gas (GHG), and Nature. The objective is to maximize our positive impact on the environment.

- **Reduce energy consumption**
- **Improve energy efficiency**
- **Transition to renewable energy sources**
- **Seek opportunities to exemplify best practice for retrofitting existing buildings**
- Projects include *retrofitting older equipment with energy-efficient models, improving building insulation etc.*

### ENERGY



- **Minimize waste generation**
- **Improve waste management**
- **Promote recycling and composting**
- Projects include *recycling more materials, reducing the use of single-use plastics/papers and cleaning up local open spaces etc.*

### WASTE



- **Minimize greenhouse gas emissions**
- Projects include *transitioning to electric vehicles, utilizing low carbon heating (heat pumps) and implementing green purchasing practices etc.*

### GHG



- **Increase water efficiency**
- Projects include *installing water-efficient fittings and toilets, reducing water use in irrigation systems and 'Refill' Thornbury scheme etc.*

### WATER

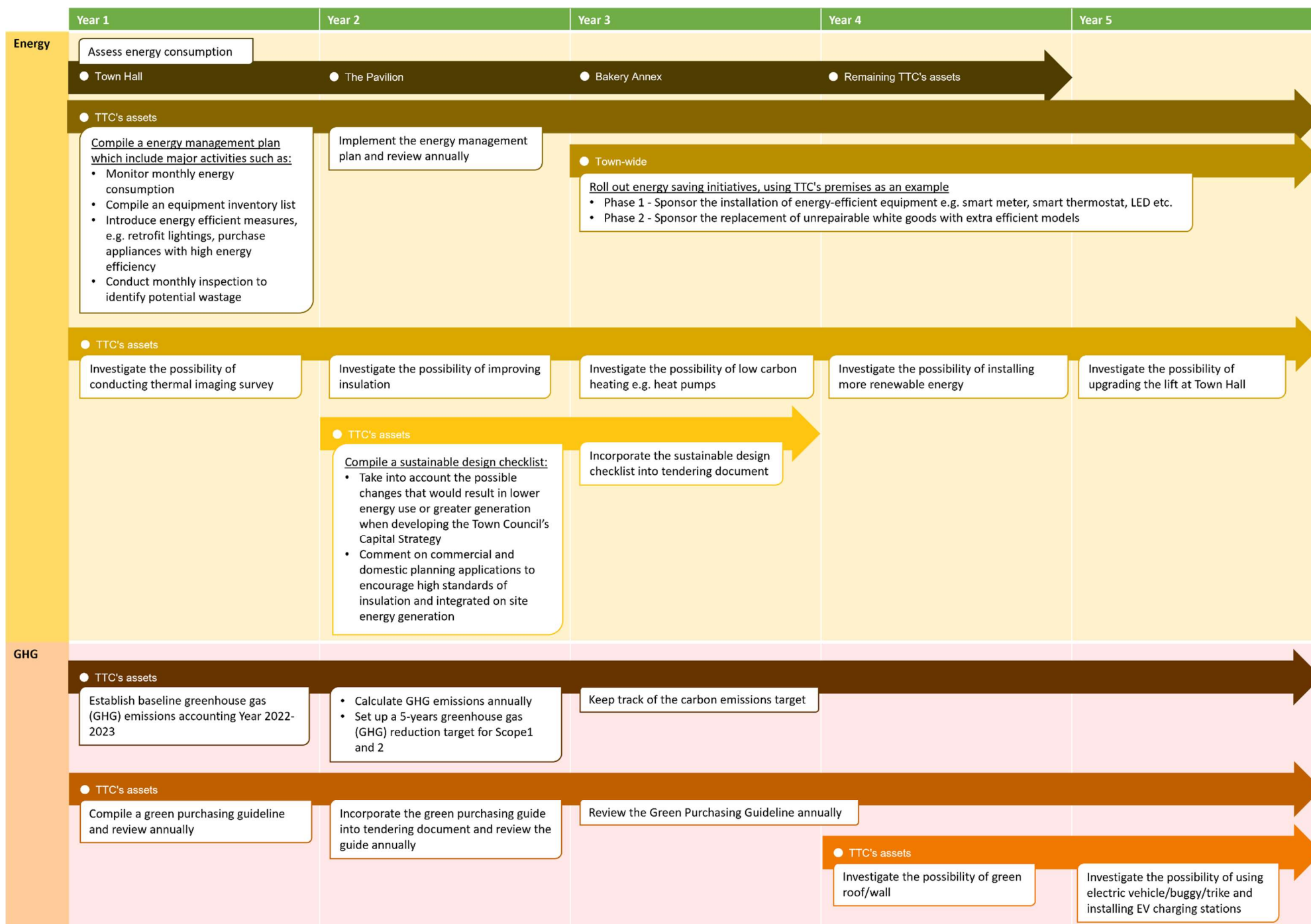


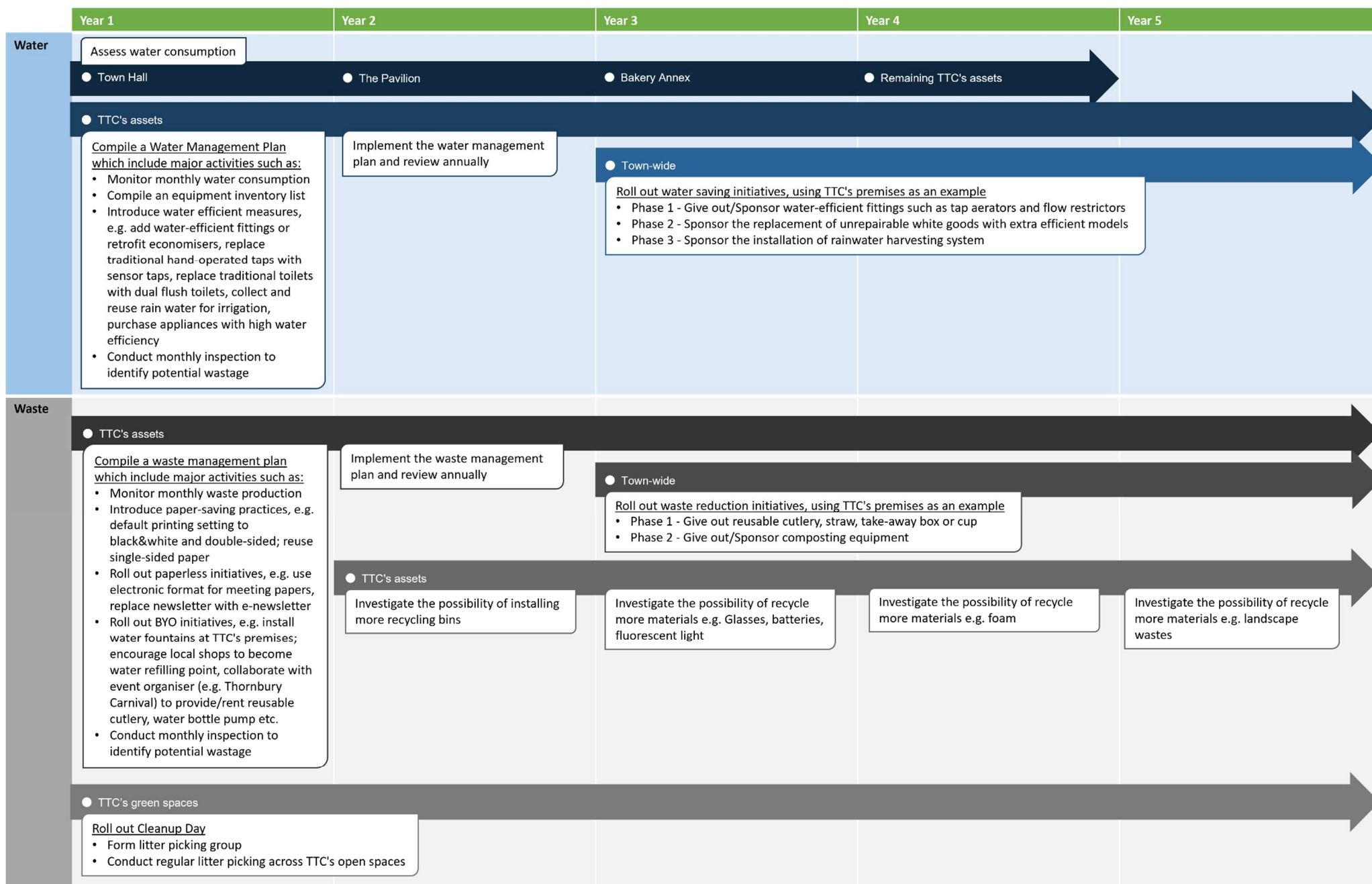
- **Preserve and restore natural habitats**
- **Enhance biodiversity**
- Projects include *adjusting the mowing regime, planting native plants, flower and hay meadows and installing bug hotels etc.*

### NATURE

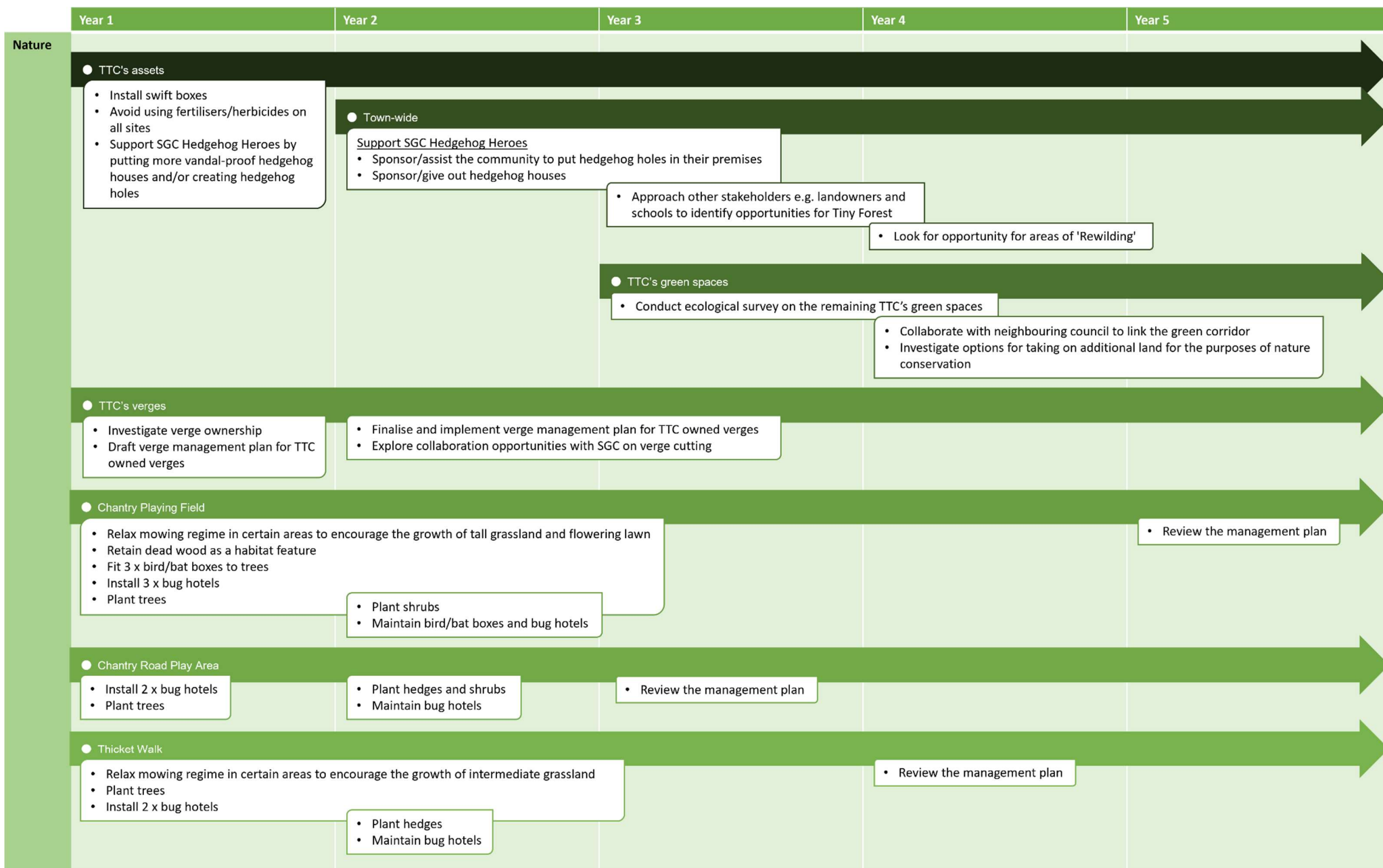


Initially, projects under this programme will take place at TTC's assets on a small-scale and then will expand town wide. It is important to note that individual projects are subject to change based on the needs of TTC and the community. Detail timeline is illustrated in the following pages:









	Year 1	Year 2	Year 3	Year 4	Year 5
Nature	<ul style="list-style-type: none"> <li>● Oakleaze Green</li> </ul>				
	<ul style="list-style-type: none"> <li>• Relax mowing regime in certain areas to encourage the growth of intermediate/tall grassland</li> <li>• Install 4 x bug hotels</li> <li>• Plant trees</li> </ul>		<ul style="list-style-type: none"> <li>• Review the management plan</li> </ul>		
		<ul style="list-style-type: none"> <li>• Plant hedges</li> <li>• Maintain bug hotels</li> </ul>			
	<ul style="list-style-type: none"> <li>● Mundy Playing Field</li> </ul>				
	<ul style="list-style-type: none"> <li>• Relax mowing regime in certain areas to encourage the growth of wildflower lawn</li> <li>• Relax hedge cutting schedule to allow certain hedges to grow taller</li> <li>• Keep clear of encroaching scrub as necessary</li> <li>• Remove vegetation and silt from ditch</li> <li>• Leave certain areas of the ditch as undisturbed patches of vegetation as refuge areas</li> <li>• Plant trees</li> <li>• Fit 3 x bird/bat box to the tree</li> <li>• Retain dead wood as a habitat feature</li> </ul>				<ul style="list-style-type: none"> <li>• Review the management plan</li> </ul>
Nature	<ul style="list-style-type: none"> <li>● Thornbury Cemetery</li> </ul>				
	<ul style="list-style-type: none"> <li>• Relax mowing regime in certain areas to encourage the growth of wildflower/tall grassland</li> <li>• Keep clear of encroaching scrub as necessary</li> <li>• Relax hedge cutting schedule to allow certain hedges to grow taller</li> <li>• Plant trees</li> <li>• Fit 3 x bird/bat box to the tree</li> <li>• Install 4 x bug hotels</li> <li>• Retain dead wood as a habitat feature</li> </ul>			<ul style="list-style-type: none"> <li>• Review the management plan</li> </ul>	
		<ul style="list-style-type: none"> <li>• Maintain bird/bat boxes and bug hotels</li> </ul>			
	<ul style="list-style-type: none"> <li>● St Mary's Church closed churchyard</li> </ul>				
	<ul style="list-style-type: none"> <li>• Relax mowing regime in certain areas to encourage the growth of wildflower/tall grassland</li> <li>• Keep monuments clear of scrub and ivy (subject to Survey Report)</li> <li>• Clear bramble and other scrub (subject to Survey Report)</li> <li>• Trim back trees</li> <li>• Fit 3 x bird/bat box to the tree</li> <li>• Retain dead wood as a habitat feature</li> </ul>			<ul style="list-style-type: none"> <li>• Review the management plan</li> </ul>	
		<ul style="list-style-type: none"> <li>• Maintain bird/bat boxes</li> </ul>			

## REFERENCES

<https://magic.defra.gov.uk/MagicMap.aspx>

<https://www.thornburytowncouncil.gov.uk/facilities/>

<https://bighedgehogmap.org/>

<https://beta.southglos.gov.uk/local-nature-action-plans>

<https://beta.southglos.gov.uk/static/d466e89cca955e64abfb9762d7780dba/Local-Climate-and-Nature-Action-Plan-toolkit.pdf>